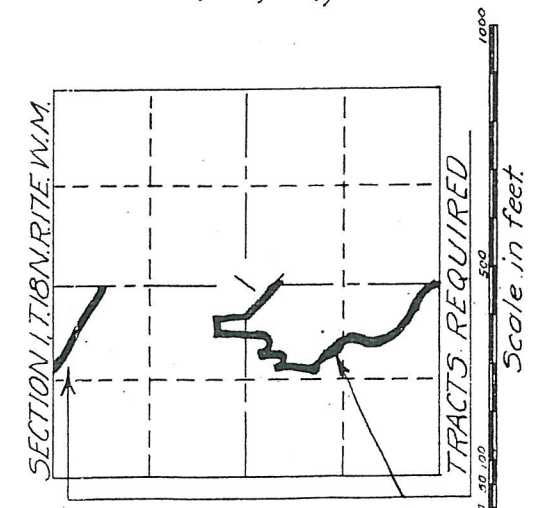


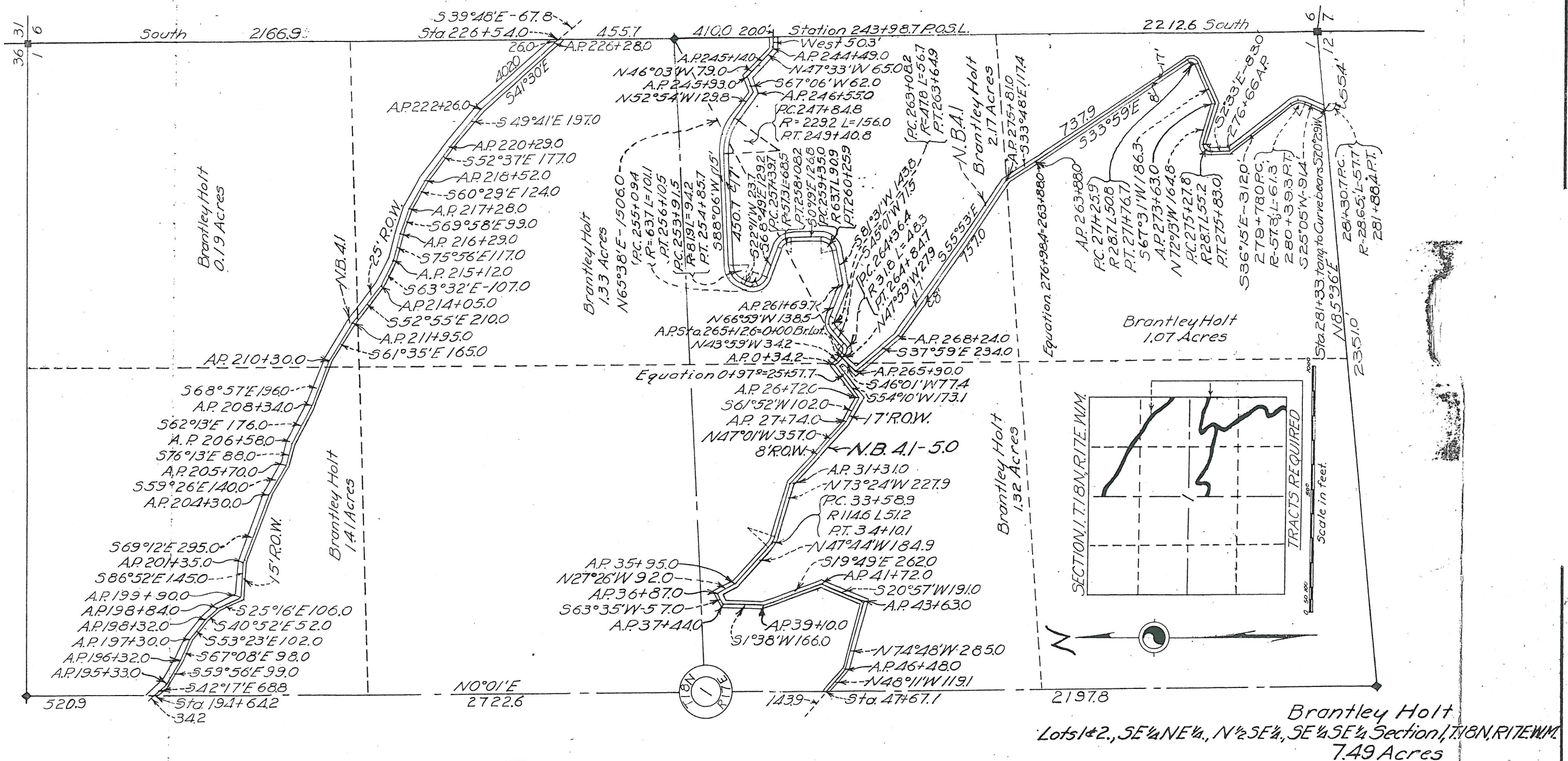
East - 1692.1
35 36
2 1

RECEIVED
JUL 10 2006
Kittitas County
CDS



SECTION 1, T.18N, R.17E, W.M.
SE 1/4 NW 1/4 Lot 3 & E 1/2 SW 1/4, Section 1, T.18N, R.17E, W.M.
3.90 Acres

J.H. Smithson
DEPARTMENT OF THE INTERIOR
BUREAU OF RECLAMATION
YAKIMA PROJECT - WASH.
KITTITAS DIVISION
N.B. LATERAL R.O.W.
DRAWN *[Signature]* RECOMMENDED
TRACED *[Signature]* APPROVED
CHECKED *[Signature]*
42-B-539 Ellensburg Wn. 11-17-30



RECEIVED
 JUL 10 2006
 Kittitas County
 CDS

Revised 11-18-32
 DEPARTMENT OF THE INTERIOR
 BUREAU OF RECLAMATION
 YAKIMA PROJECT - WASH.
 KITTITAS DIVISION
 N.B. LATERAL R.O.W.
 DRAWN BY [Signature] RECOMMENDED
 TRACED BY [Signature] APPROVED
 CHECKED M.O.S.
 42-B-540 Ellensburg, Wn., 11-12-30